

Yuesenmed®



YSTEYSTE808

Automatic Chemistry Analyzer

YSTEYSTE808

Automatic Chemistry Analyzer

- Throughput constant 200 T/h, best for middle or small size hospital
- Closed integrated photovoltaic systems, no mechanical parts, maintenance free
- Minimum reaction volume is 150ul, cost saving
- Discrete, random access, automatic
- Random choice of method, the real discrete automatic chemistry analyzer
- Automatic chemistry analyzers have gained a lot of national patents during the researching.

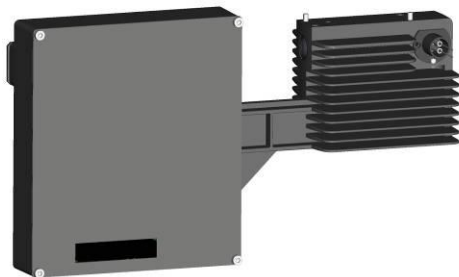


Analyze Unit

- Throughput: constant 200 T/h (non-ISE).
- 81 reaction cuvette positions , multi-channel testing together.
- Minimum reaction volume is 150μl, cost saving.
- Determined by the sample sequence, inserted at any time emergency.
- Heating method: Direct thermal solid thermostat closed.

Optical Unit

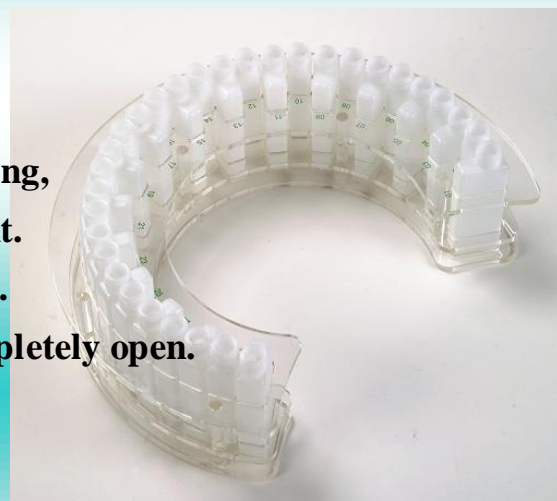
- Closed integrated photovoltaic systems, no mechanical parts , maintenance free.
- Light Source : Halogen-tungsten lamp; Lifetime≥2000 h.
- 8 Wavelength, support single or dual wavelength.





Reagent Unit

- 30 reagent positions.
- Automatically detect the amount of reagent remaining, display in real time the remaining amount of reagent.
- 15ml or 30ml reagent bottle. Dead volume <0.5 ml.
- Support for single and double reagent, reagent completely open.
- Internal barcode reader (option).



Sample Unit

- 27 sample positions.
- Testing according setting, random access.
- Real time display of testing status.
- Internal barcode reader (option).

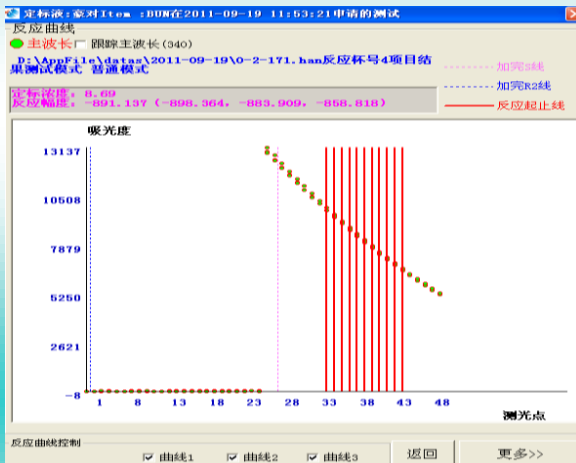


Reagent/Sample handing Unit

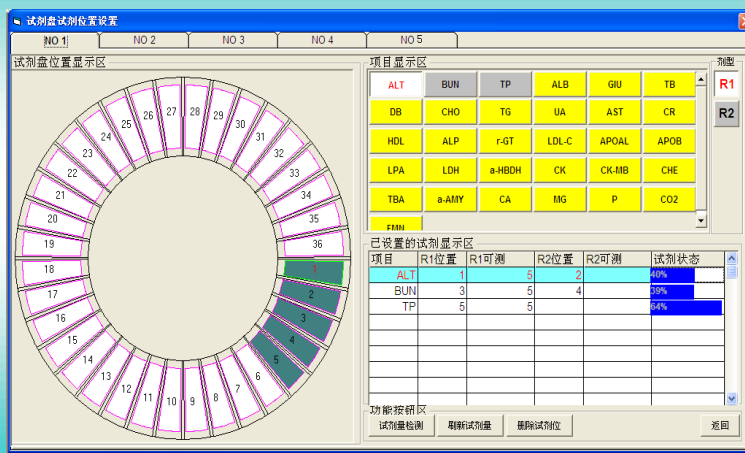
- Intelligent liquid detection & collision protection (**Red light: collision**; **Blue light: detection of the liquid**).
- Reagent volume: 2 ~ 30µl, step by 0.1µl .
- Probe cleaning: automatically washing for both inside and outside, carry over < 0.1%.
- Automatically dilute and retest.



Calibration and quality control Unit



- Linear curve type : Single-point linear 、 two-point linear and multi-point linear.
- Nonlinear curve type: Logit-4p、 Logit-5p、 polynomial、 factor.
- Automatically use best calibration curve and standard.
- Quality control chart: L-J、 Westgard TwinPlot、 Cumulative.



Operation Unit

- Operation system: Windows XP/Office 2000, interface is intuitive and operate it easily, arbitrary operating authority; No restrictions on the amount of time and storage, permanent preservation of various types of data, automatic storage and backup.

- Can print the contents of any custom; Offers a variety of print formats.
- Help and operation guide on line in English.
- No restrictions on setting test parameters.
- Unique password for user management, rational allocation of user rights.
- Real time display of testing status、the remaining amount of reagent、testing status 、 reaction curve and the test progress.
- Real time display of reaction plate temperature.
- RS-232 standard interface, support for the hospital network, print reports remotely.

Others

- Temperature: 10–30℃.
- Humidity: less than 85%.
- Try to avoid strong light.
- Floor level up: less than 1/200.
- Barometric: 86.0kPa–106.0kPa.
- Power Supply: AC 220V±22V 50Hz±1 Hz.
- Water consumption: less than 1L/h.
- Frequency: 200 VA.
- Dimension: 870mm×720mm×1150mm
- Weight: 86kg

YSTE808		Specifications
Automatic Chemistry Analyzer		
Analyze Unit		
Throughput	Constant 200T/h(non-ISE)	
Theory	Absorption spectronmetry, Transmission turbidimetry	
Methodology	End-point、Fixed-time、Kinetic	
Test according setting, random access		
Reaction plate	Contain 81 reaction cuvettes	
Maximun reaction time	15 minutes	
Minimum reaction volume	150 ul	
Material of cuvettes	Special UV-transparent optical glass	
Cuvettes use	One-off cuvettes	
Optical Unit		
Light Source	Halogen-tungsten lamp	
Photometer	Reversed optics	
Wavelength	340nm-800nm wavelength option	
Absorption	0-4 Abs	
Reagent Unit		
Reagent plate	30 reagent positions, support for single and double reagent, reagent completely open	
Reagent storage temperature(option)	4~12℃	
Reagent bottle	15 ml、30 ml, dead volume is less than 0.5 ml	
Reagent volume	20-300 ul,step by 0.1 ul	
Sample Unit		
Sample plate	27 sample positions	
Sample type	Human (Animal) serum、 plasma、 urine etc.	
Samples cup	Support one-off micro cups	
Sample volume	2-30 ul,step by 0.1 ul	
Sample/Reagent probe	Automatically checked; Patent technology liquid level detection; Collision protection probe cleaning: Automatically washing for both inside and outside.	
Temperature control Unit		
Heating method	Direct thermal solid thermostat closed	
Temperature equilibrium time	<3 minutes	
Reaction temperature	37±0.2℃	
Temperature fluctuation	±0.2℃	

Operation Unit		
Software	WindowsXP、2000	
Database	SQL Server	
Data Storage	Automatic store & copy; No time and volume limit; Lifetime preservation	
Print format	Can be set up, offer several standard format	
Calibration mode	Linear curve type: Single-point linear, two-point linear and multi-point linear none linear; Curve type: Logistic-Log 4P,Logistic-Log5p,Spline,index automatically use best calibration curve and standard	
Quality control methods:	Real time, within day & between day	
Quality control diagram	L-J、cumulative、twin Plot	
Status display	Real time monitoring of reagent residual volume。Running status of reagent tray, samples tray	
Adjustment	Dynamic and real time display of running status; Intelligent carry over settings to adjust test sequence; Original reaction data record; Detail profile of alert messages	
Setting	Operation permission setting, Item setting, cross pollution setting, cuvette blank setting	
Others		
Water consumption: < 1L/h	Power Supply: AC 220V ±22V 50Hz±1Hz	
Frequency: Maximum 200VA	Dimension: 880mm×720mm×1150mm	
Weight: 86kg	Accessory: Software	

Test project

- ALT、AST、TP、ALB、TBIL、DBIL、ALP、r-GT、CHE、TBA、5-NT
- UREA、CR、UA、TCO2
- CHOL、TG、HDL、LDL、ApoA、ApoB、LPa
- AMY、LIP
- GLU、GSP
- CK、CK-MB、a-HBDH、LDH、MB
- CRP、RF、ASO